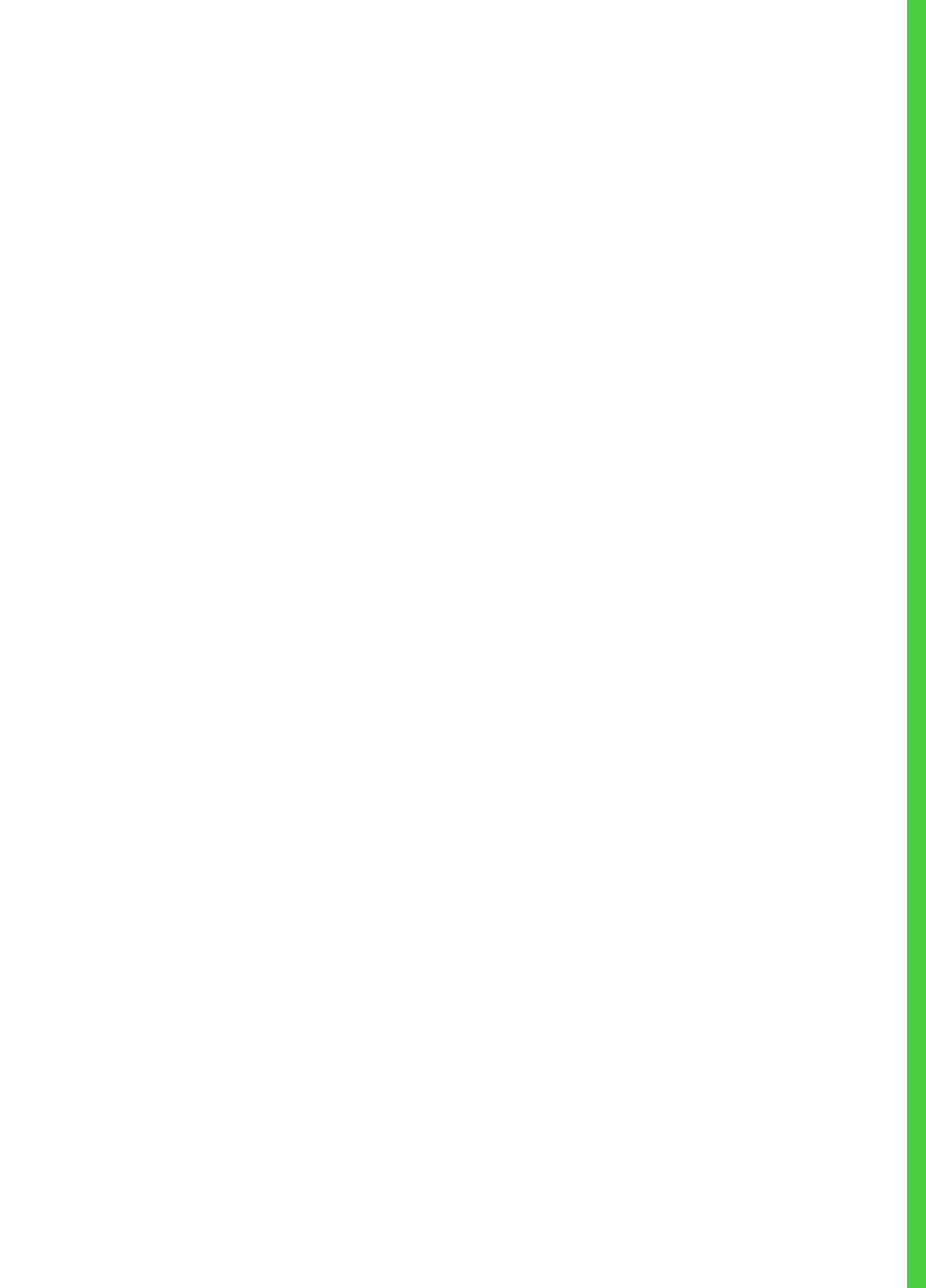



THE VAULT

Korpys/Löffler





ACCESSIBLE. (1) A site, building, facility, or portion thereof that complies with the requirements of the Architectural Barriers Act (ABA) for accessibility to sites, facilities, buildings and elements by individuals with disabilities. (2) Referring to building exterior walls and windows, anything located 5.00 m or less above grade or accessible platform.

ACCESSIBLE WINDOWS/OPENINGS. All ground and higher floor windows/openings (includes vents, sidelights, air conditioners, etc.) easily reached from outside (generally, without the use of ladders, rope or other climbing aid) and greater than 625 cm² (96 square inches).



ANTI-RAM: Description of a barrier meeting the specification for anti-ram, SD-STD-02.01; sufficient, at the maximum threat, to arrest a 6800 kg (15,000 lb.) gross-weight vehicle traveling at a maximum of 80 kilometers per hour (50 mph) perpendicular to the barrier.

ARSO: Assistant RSO. ASE. Acoustic Shielded Enclosure. See also 'Certified Shielded Enclosure'.

ATTACK SIDE. Public (or exposed) side of a perimeter barrier, hard-line wall, door, or window. For vehicle barriers, the direction of approach for uninspected vehicles. See "protected side."



BALLISTIC RESISTANCE. Products and designs certified by DS/PSP/PSD under the provisions of SD-STD-01.01 (see 12 FAH-5 H-011, subparagraph (4)) to withstand a minimum of 7.62/5.56 mm rifle rounds fired from approximately 6 00 m without penetration or spalling.

BOLLARD. Concrete-filled steel pipes used to channel or restrict vehicular traffic.


BR. Ballistic Resistance or Ballistic-Resistant (formerly HPR).



CLEARED AMERICAN GUARD (CAG).
Cleared U.S. citizen (Top Secret), who is selected, professionally trained, and assigned to Project for purpose of protecting security integrity of Site, building, materials, furniture, fixtures, equipment and other items scheduled for inclusion in controlled access area(s) (CAA).

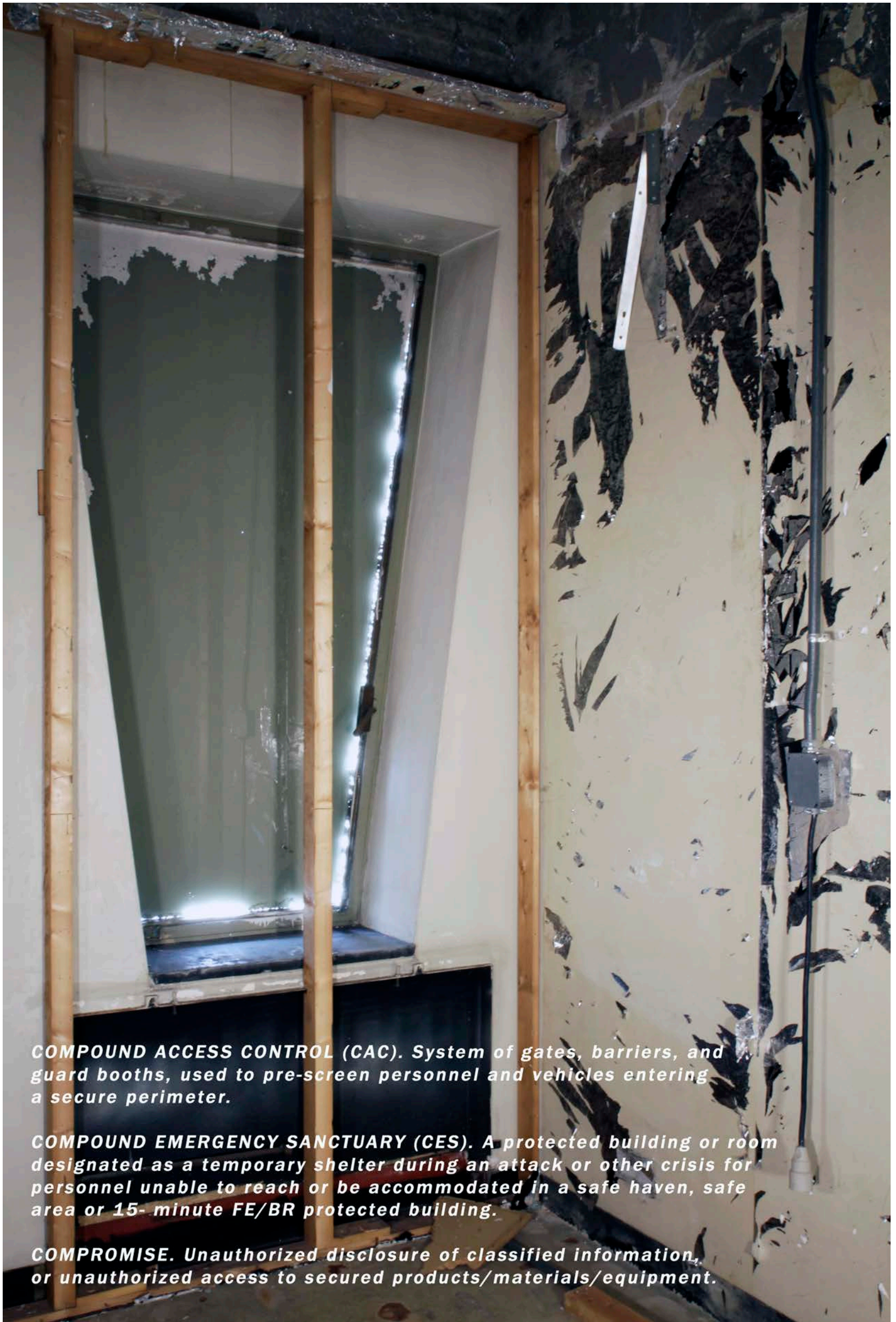
CLEARED U.S. CITIZEN. *U.S. citizen possessing current validated security clearance (minimum SECRET) as required by DOD Form 154 Contract Document, and authorized by the Project Director/COR to be at the Final Construction Site, Support Site, and any Secure Storage Area (SSA).*

CMP. Compound. *Also referred to as*



COMMON USE MATERIALS. Construction materials used throughout the building without regard to specific locations. Examples include reinforcing steel (rebar), wall-board, light fixtures, carpet tile, ceiling tiles and wire conduit. These materials shall be used in CAA and non-CAA areas. Specifically excluded are materials that will only be used in the CAA.

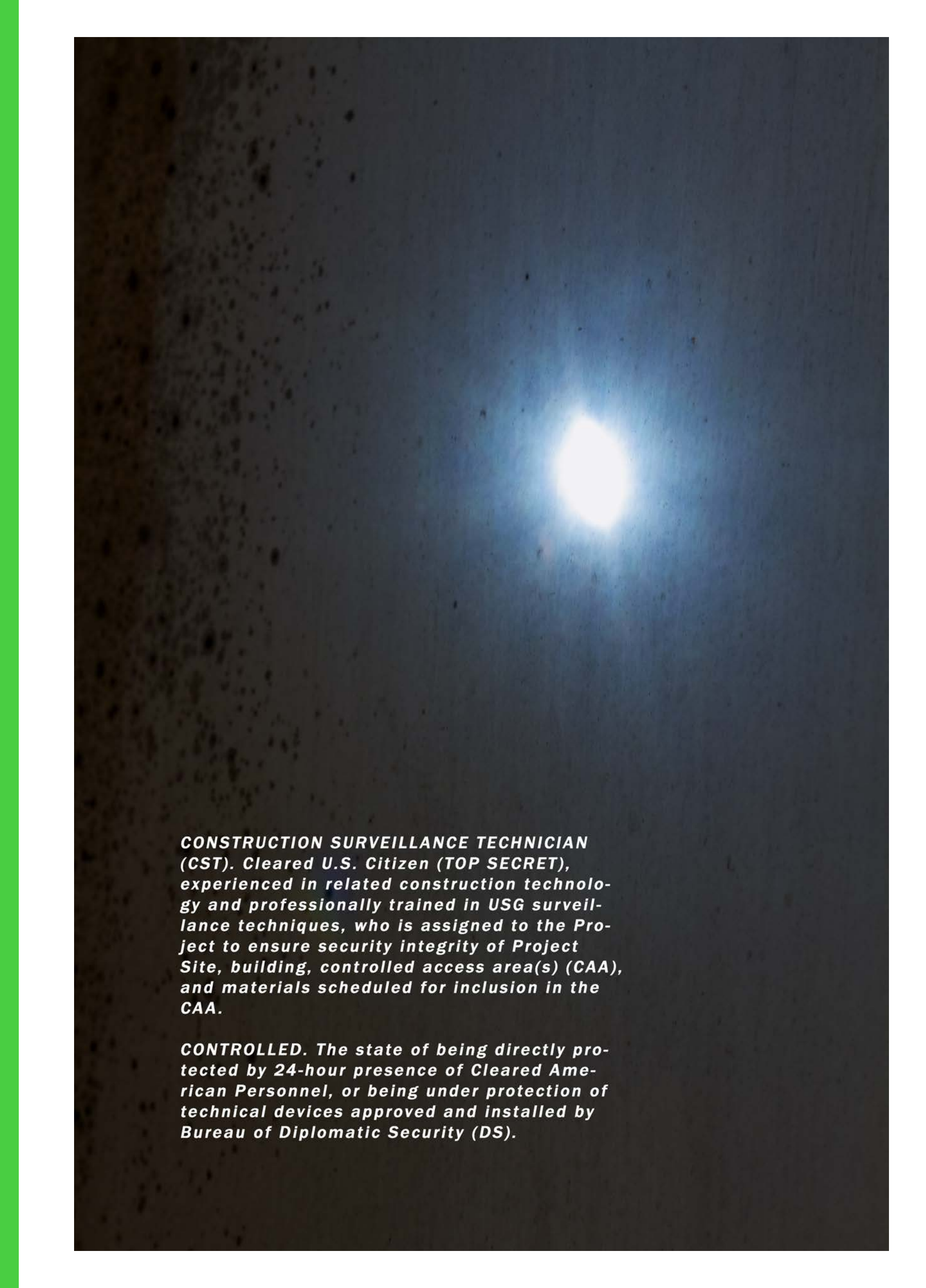
COMMON WALL. A wall, floor, ceiling, or other physical barrier separating USG-controlled spaces from adjoining non-USG-controlled spaces.



COMPOUND ACCESS CONTROL (CAC). System of gates, barriers, and guard booths, used to pre-screen personnel and vehicles entering a secure perimeter.

COMPOUND EMERGENCY SANCTUARY (CES). A protected building or room designated as a temporary shelter during an attack or other crisis for personnel unable to reach or be accommodated in a safe haven, safe area or 15- minute FE/BR protected building.

COMPROMISE. Unauthorized disclosure of classified information, or unauthorized access to secured products/materials/equipment.



CONSTRUCTION SURVEILLANCE TECHNICIAN (CST). *Cleared U.S. Citizen (TOP SECRET), experienced in related construction technology and professionally trained in USG surveillance techniques, who is assigned to the Project to ensure security integrity of Project Site, building, controlled access area(s) (CAA), and materials scheduled for inclusion in the CAA.*

CONTROLLED. *The state of being directly protected by 24-hour presence of Cleared American Personnel, or being under protection of technical devices approved and installed by Bureau of Diplomatic Security (DS).*



CONTROLLED ACCESS AREA (CAA). The only area(s) within a building where classified information or materials may be handled, stored, discussed, or processed. All unauthorized personnel must be under constant escort and observation. There are two categories of CAAs: core and restricted.

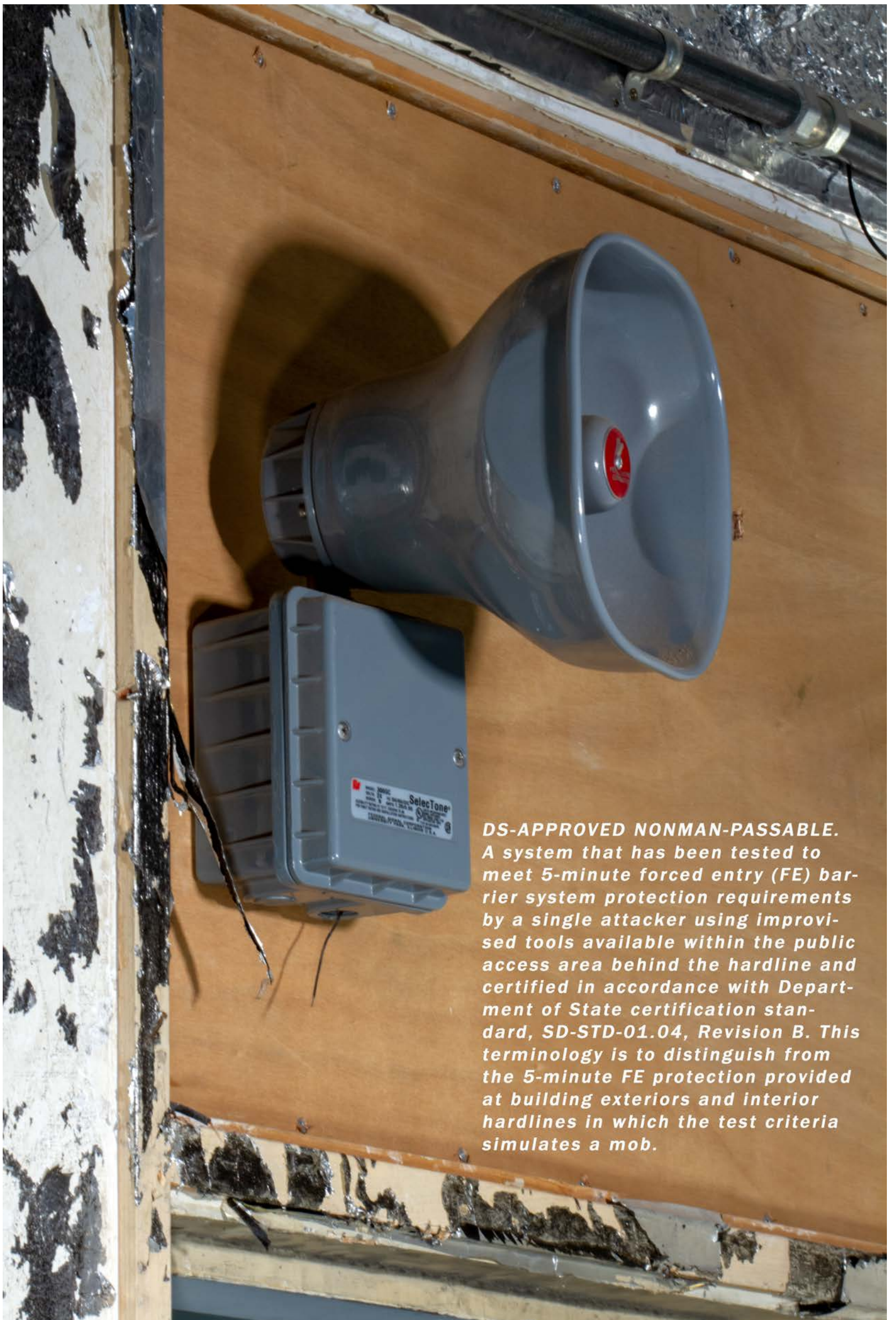
CORE AREA. Those areas of the CAA where unescorted access is limited to authorized U.S. citizens holding a TOP SECRET clearance. Authorized U.S. Citizens with a SECRET clearance may have access to core areas, but must be under constant escort and observation. Certain areas also require special access authorization



DEAL TRAY. The subassembly of a transaction window which enables routine passage of materials of limited size between sides of the window. The window may be fixed, have a convoluted design, or include moveable elements to enhance security.



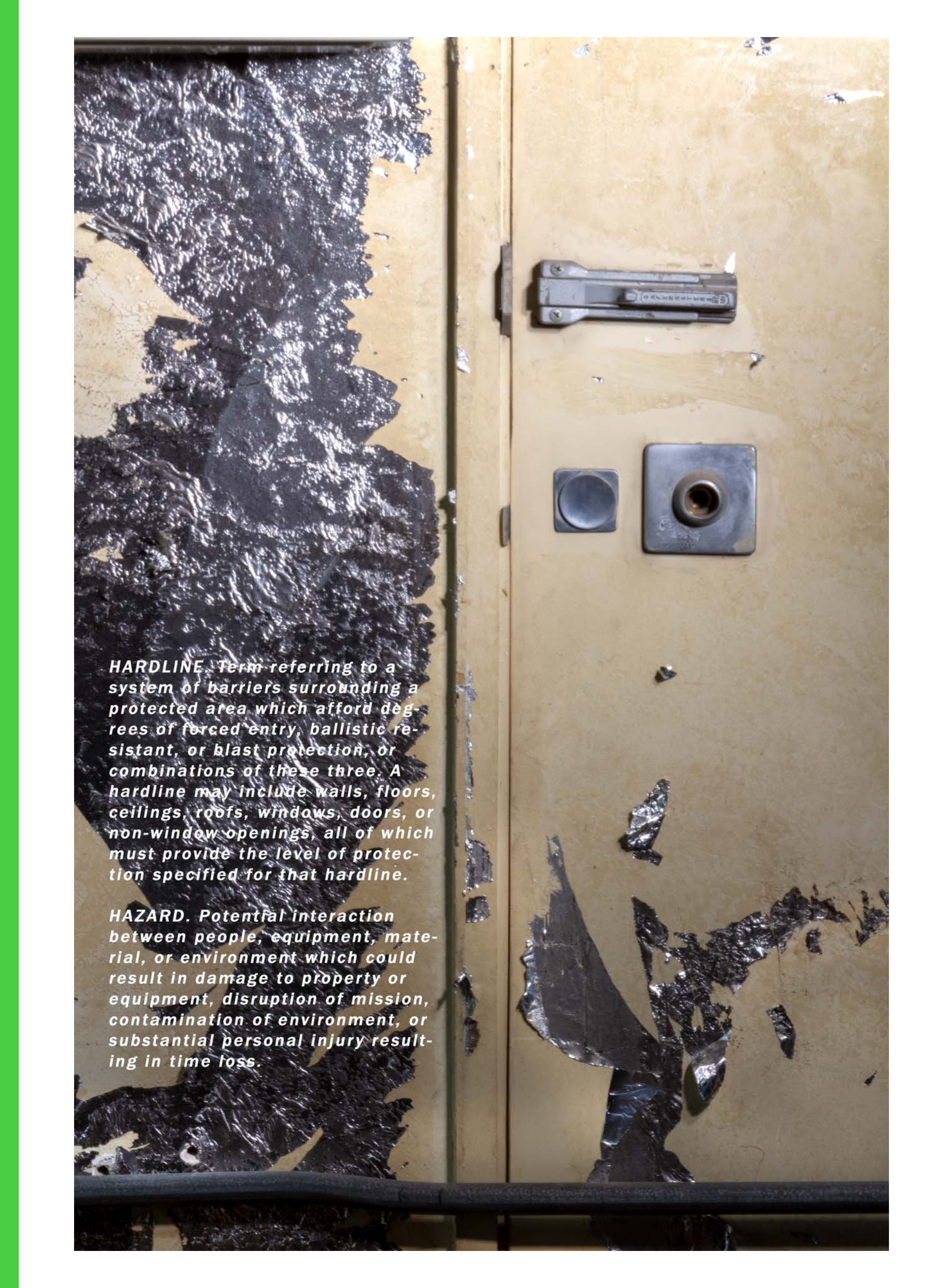
DISINTEGRATOR. A DOS-approved machine for destruction of material into a powder-like form which affords more secure destruction than a shredder.



DS-APPROVED NONMAN-PASSABLE. A system that has been tested to meet 5-minute forced entry (FE) barrier system protection requirements by a single attacker using improvised tools available within the public access area behind the hardline and certified in accordance with Department of State certification standard, SD-STD-01.04, Revision B. This terminology is to distinguish from the 5-minute FE protection provided at building exteriors and interior hardlines in which the test criteria simulates a mob.



Flying Fragments. Fragments generated by the destruction of "unhardened" (not blast-resistant) features such as perimeter walls, adjacent structures, sunscreens, veneers, ornament, exposed mechanical, electrical equipment, etc.




HARDLINE. Term referring to a system of barriers surrounding a protected area which afford degrees of forced entry, ballistic resistant, or blast protection, or combinations of these three. A hardline may include walls, floors, ceilings, roofs, windows, doors, or non-window openings, all of which must provide the level of protection specified for that hardline.

HAZARD. Potential interaction between people, equipment, material, or environment which could result in damage to property or equipment, disruption of mission, contamination of environment, or substantial personal injury resulting in time loss.



INSPECTABLE MATERIAL.
Materials that can be inspected through means approved by Bureau of Diplomatic Security (DS) or Security Management Division (OBO/PE/SM). Examples include sections of single wall ductwork, sheets of gypsum board, pieces of wood, and non-electrical fixtures.



MAN-PASSABLE. An opening having the minimum area required for an intruder to physically pass through a barrier and enter a secured area. In accordance with DS/PSP/PSD specifications (SD-STD-01.01), the minimum area considered passable is 625 cm² (96 square inches) with its smallest dimension equal to, or larger than, 150 mm. also - Under the provisions of DS Certification Standard - SD-STD-01.01, the minimum area considered passable is 625 cm² with its smallest dimension equal to, or larger than, 150 mm. Nominal dimensions are as follows: Square Opening: 250 mm x 250 mm; Rectangular Opening: 150 mm by 400 mm; Circular Opening: 300 mm.



MAXIMUM DEMOLITION. As applied to the CAA, the removal of all finish work material down to the elements or materials defined as "general construction." This includes overhead ceiling material, wall and ceiling plaster, gypsum board, flooring, doors/frames, electrical wiring, light fixtures, electrical switches, receptacles, telephone wiring, conduit, window/frames and heat radiators.

MSG. Marine Security Guard.

HOLD DOORBELL

3 SECONDS



NEWLY ACQUIRED BUILDING (NAB). In terms of physical security for overseas USG facilities, a newly acquired building (NAB) is an office building or compound not constructed by or on behalf of USG which was acquired by purchase, lease, or other means, subsequent to June 1991.



OBO. Overseas Buildings Operations

TO CONTACT:
IPC: DIAL 2390
ITC: DIAL 2395



PCC. Post Communications Center. An area within the Chancery or Consulate where post communication activity takes place. Also - An area within the Chancery/Consulate requiring the highest levels of protection where intelligence, cryptographic, security, and other particularly sensitive, and other particularly sensitive or compartmentalized information may be handled, stored, discussed or processed. The PCC normally includes the common transmission facility (CTF), information program center (IPC), information technical center (ITC), and the communications support activity (CSA).



PERIMETER BARRIER. A wall, fence, structure, or a natural topographic feature which provides protection to the compound. The outer defensive tier of the compound.

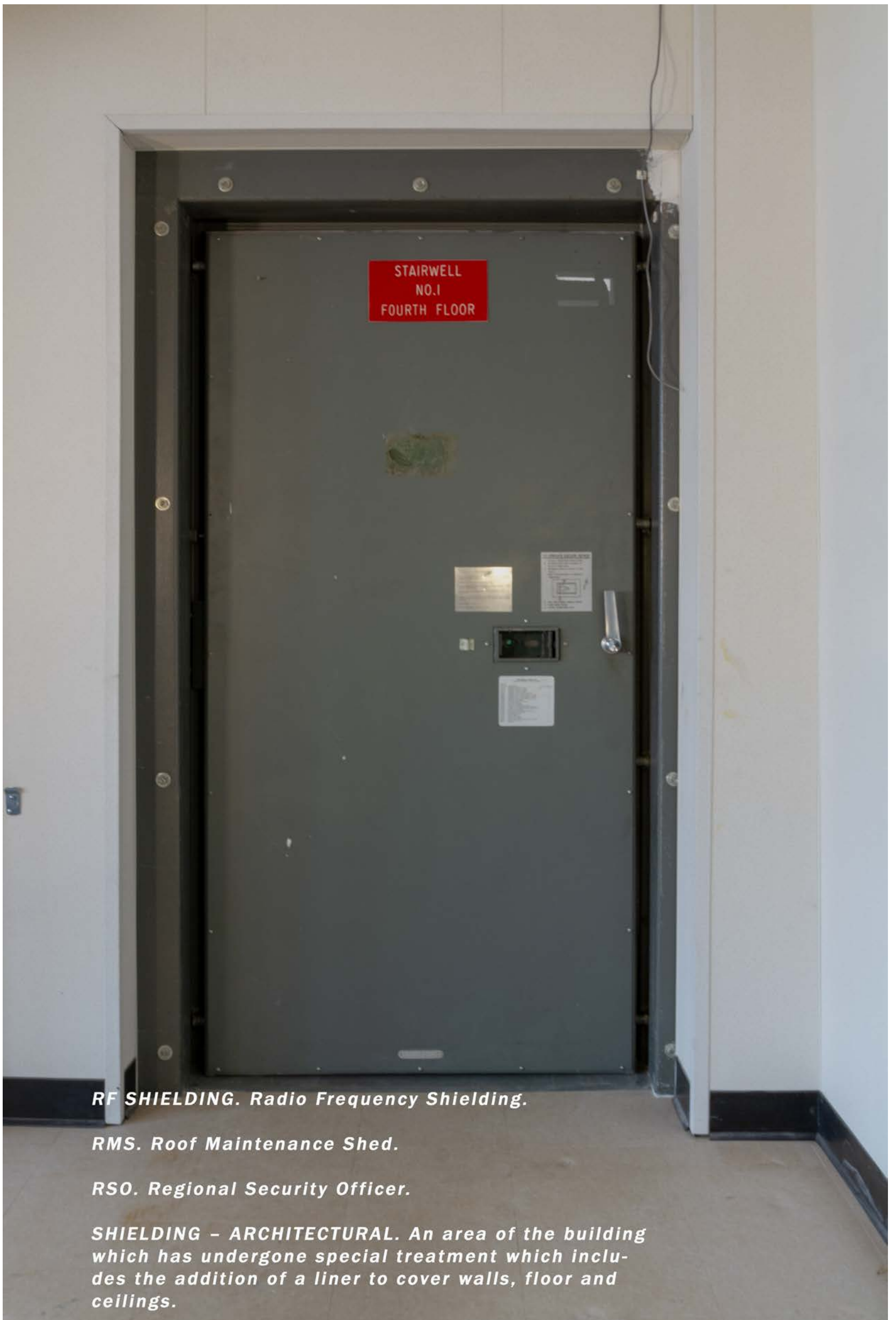
POST ONE. Marine security guard location generally staffed on a 24-hour basis. Post One is the primary guard booth for a DOS facility and is normally located at the main PAC E/E to a diplomatic facility. Secondary guard booths at the same facility will be designated as Post Two, Post Three, etc, and are staffed by MSGs, CAGs, local FSN guards, or receptionists. Also known as "MSG-1" and "Guard Post 1."

1	2 ABC	3 DEF
4 GHI	5 JKL	6 MNO
7 PQRS	8 TUV	9 WXYZ
	0	

RANDOM PROCUREMENT. An approved method, which must be executed in accordance with Office of the Procurement Executive (A/OPE) Procurement Policy Directive No. 5, whereby vendor is selected at random from among number of possible vendors (usually 3 or more), each of whom has been identified as able to supply required item in required quantity from shelf stock. The required quantity of item is procured and immediately taken into controlled possession by cleared U.S. Citizen, and transported to Controlled Access Area(s) (CAA) or secure storage area (SSA), without vendor's prior knowledge of intended procurement, and without referrals to or from vendor. This process is generally limited to procurement of low-volume and emergency items involving CAA. Cleared U.S. Citizen (e.g. Contractor or Contracting Officer) is required to make random selection of required units from vendor's shelf stock.



RAW MATERIALS. Unfinished materials, normally unprocessed natural materials, and non-fabricated products, for use in construction, manufacture, or assembly of building components. Examples include water, aggregate, sand, and cement/gypsum/lime.



RF SHIELDING. Radio Frequency Shielding.

RMS. Roof Maintenance Shed.


RSO. Regional Security Officer.

SHIELDING – ARCHITECTURAL. An area of the building which has undergone special treatment which includes the addition of a liner to cover walls, floor and ceilings.



SAFE HAVEN. A designated area within a building that serves as an emergency sanctuary and provides at least 60- minutes forced entry and ballistic-resistant (FE/BR) protection, emergency power, ventilation, communications, and emergency escape.

SALLYPORT. An enclosed area used for verifying identity and conducting inspections before allowing a vehicle or pedestrian to continue into the protected area. Usually incorporates double barriers to prevent tailgating.



SHREDDER. A DOS-approved machine for destruction of paper by cutting and chopping into confetti-like particles; provides a lower level of destruction than a disintegrator (see Disintegrator).

SPALL/SPALLING. Target or bullet material which is broken free due to ballistic impact and projected into the surrounding area.



SRWF. Shatter Resistant Window Film.



**BLACK
UNREGULATED
POWER PANEL**

3 Phase - 208 Y / 120 Volt

**BLACK
UNREGULATED
POWER PANEL**

3 Phase - 208 Y / 120 Volt

M
A
I
N

1	IPC OFFICE LIGHTS	2	IPC OFFICE OUTLETS
3	IPC OFFICE LIGHTS	4	IPC OFFICE OUTLETS
5	PCC COVER LIGHTS	6	ITC OFFICE OUTLETS
7	ITC DOOR BELL	8	ITC OFFICE OUTLETS
9	OUTLETS	10	ITC LIGHTS
11	OUTLETS	12	FIRE ALARM PANEL
13	EDWARDS, PCC	14	CHG. PC DISINTEGRATOR
15	CHILLER LOCATED	16	ON ROOF
17	ON ROOF	18	3PH PHASED
19	OUTLET	20	CT
21	ITC 208V	22	SER PANEL
23	ITC 208V	24	3-POLE 208V
25	OUTLET		
27	ITC 208V		
29	OUTLET		

Last Updated: 19 September 2001



UNREGULATED 208/120

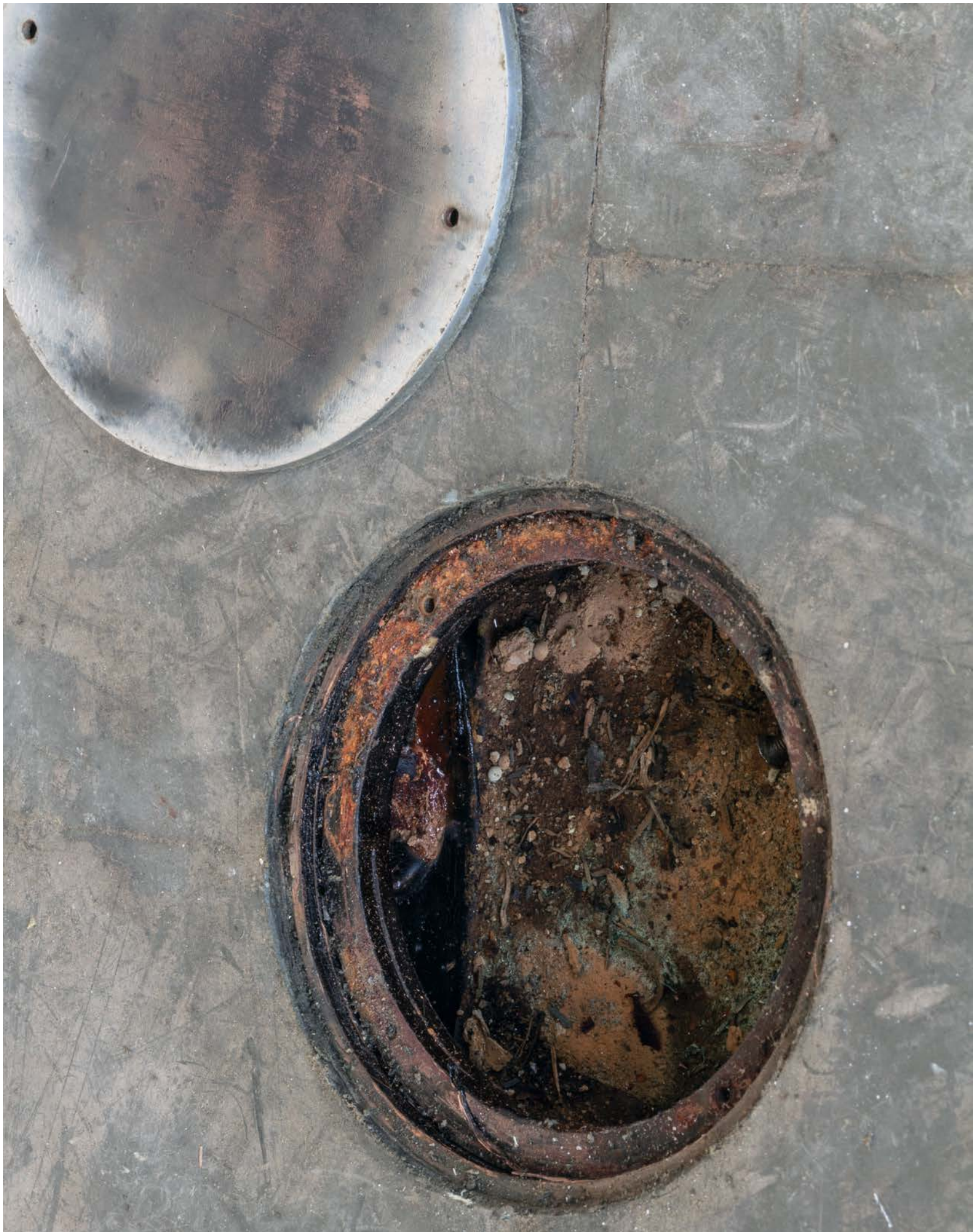


MAIN

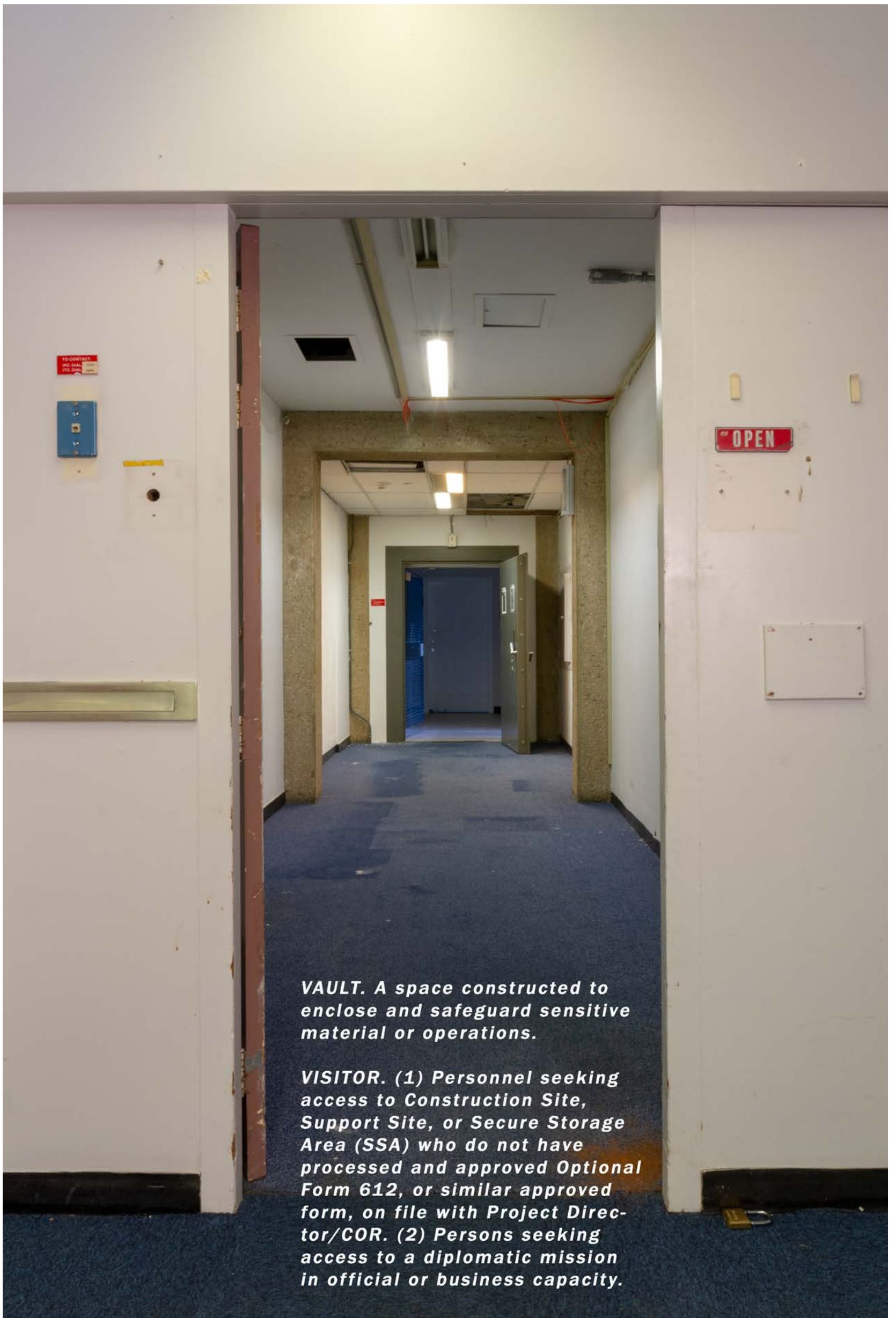
1 2
3 4
5 6
7 8
9 10
11 12
13 14
15 16
17 18
19 20
21 22
23 24
25 26
27 28
29 30

STANDOFF. See "Setback".

STE. Secure Telephone Equipment. Digital-based secure telephone device. It replaces the Secure Telephone Unit - third generation (STU-III).



SYSTEMS INTERFACE CABINET (SIC). *The terminal wiring interface for all electrical security systems within a building, such as alarms. This cabinet will be in a dedicated room located as close to the MSG booth as possible. The door to the SIC room must be alarmed. The room will normally possess an interior area of at least 14 m² (150-square ft.).*

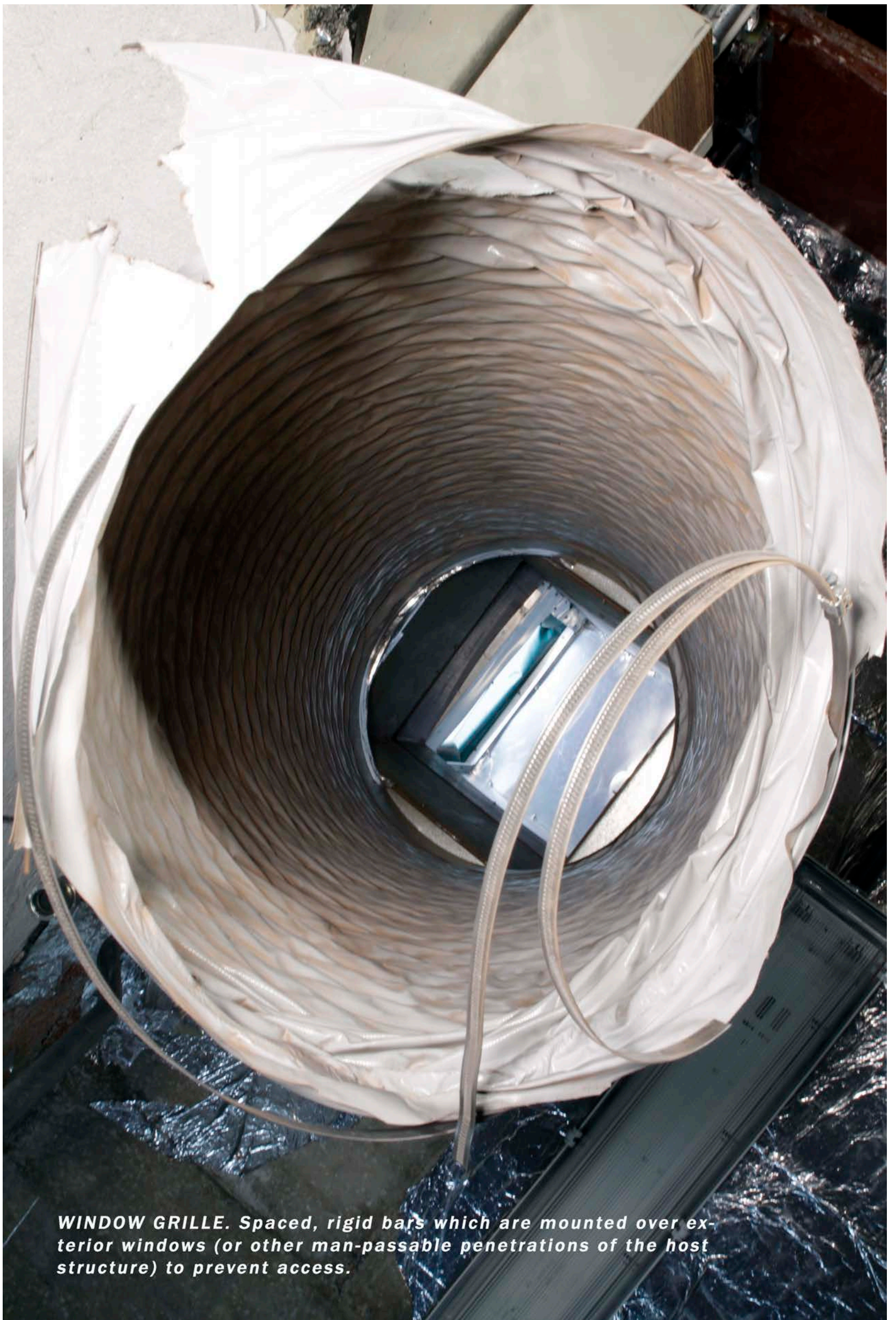


VAULT. A space constructed to enclose and safeguard sensitive material or operations.

VISITOR. (1) Personnel seeking access to Construction Site, Support Site, or Secure Storage Area (SSA) who do not have processed and approved Optional Form 612, or similar approved form, on file with Project Director/COR. (2) Persons seeking access to a diplomatic mission in official or business capacity.



VISITOR. (1) Personnel seeking access to Construction Site, Support Site, or Secure Storage Area (SSA) who do not have processed and approved Optional Form 612, or similar approved form, on file with Project Director/COR. (2) Persons seeking access to a diplomatic mission in official or business capacity.



WINDOW GRILLE. Spaced, rigid bars which are mounted over exterior windows (or other man-passable penetrations of the host structure) to prevent access.



WTMD. Walk-Through Metal Detector.

ZONE I. Building exterior surfaces - entrances, walls, and roof.

ZONE II. Exterior areas near buildings - roadways and walkways.

OBO-ICS 2015 OBO-International Codes Supplements JANUARY 2015

Amendments to the International Building Code

This publication appears on the occasion of the exhibition:

Korpys/Löffler The Vault
01.06.2019 — 01.09.2019

Location: former American embassy
Lange Voorhout 102, The Hague

Photos and text selection: Korpys/Löffler

The German artists Andree Korpys and Markus Löffler's work together since 2009 under the name of Korpys/Löffler.

They had several international exhibitions, amongst others at Kunstverein Braunschweig 2018; 10th Berlin Biennale; Museum für Angewandte Kunst, Frankfurt 2017; Haus der Kulturen der Welt, Berlin 2016; ZKM Karlsruhe 2015; Goethe Institut New York 2015; Künstlerhaus Bremen 2012; Manifesta 7, Trento 2008; Zero, Zentrum Kunst- und Mediatechnologie, Karlsruhe 2002; Kunstverein Hamburg 1996; Casino Luxembourg 1999.

Printer: Oranje van Loon, Den Haag

Sponsor: Foscarini, Vitra.

Thanks: Ministry of Education, Culture and Science,
Gemeente Den Haag, ANNA Vastgoed & Cultuur,
Mondriaan Fonds

Publication: West Den Haag

Edition: 500

ISBN: 978-90-79917-80-8

West

Lange Voorhout 102
2514 EJ Den Haag
The Netherlands
+31 (0)70 392 53 59
www.westdenhaag.nl
info@westdenhaag.nl

**#ONZE
AMBA
SSADE**